

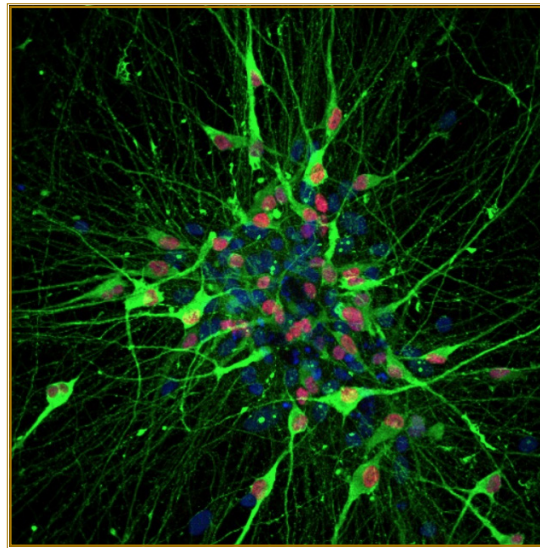


Stem Cell & Regenerative Medicine Center

UNIVERSITY OF WISCONSIN-MADISON

Welcome to our Winter/Spring 2016 newsletter.

For more updates, join us on [Facebook](#), [Twitter](#), or on our [website](#).



Research News

- [Autism test on the horizon as firm screens for signatures of disorder](#), Feb. 26
- [Advancing microcellular polymers](#), Feb 18
- [Wisconsin researchers transform common cell to master heart cell](#), Feb. 11
- [Pluripotent stem cells offer blood ready for preclinical trials](#), Jan.25
- [High-content analysis of CRISPR-Cas9 gene-edited human embryonic stem cells](#), Jan. 19
- [First serotonin neurons made from human stem cells](#), Dec. 19 (*see image above*)
- [Researchers form primitive leukemia cells in lab](#), Dec. 1



Fast Fact

The SCRMC recently launched the Career Enhancement Opportunities (CEO) program, which includes the first-ever offering of our new course "Foundations of Innovation in the Stem Cell Industries". See the [CEO website](#) or contact [Sue Gilbert](#) for more details about the CEO program and its offerings for UW-Madison's top Ph.D. students in stem cell and regenerative medicine fields.

Connecting students with WiSCR and SSSCR



Are you an undergraduate, graduate student, or postdoc looking for more opportunities to connect with your peers and keep up with education, research, and outreach opportunities?

If so, start here for the graduate and postdoc group, [Wisconsin Stem Cell Roundtable](#) (WiSCR). For undergrads, visit the [Student Society for Stem Cell Research](#) (SSSCR).

(Left) SSSCR Outreach at the Madison Children's Museum, Fall 2015. (*J. Lenon image.*)



Not to Miss!

March 12-16, 2016

["Second International Advanced Course on Regenerative Medicine Manufacturing"](#)

March 16-19, 2016

Regenerative Medicine Workshop at Hilton Head
["Discovery, Technologies and Translation"](#)

April 13, 2016

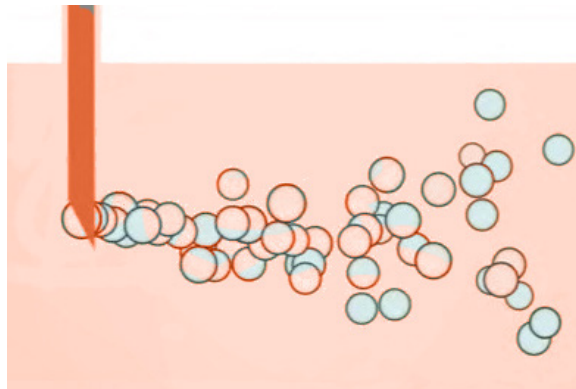
11th Annual Wisconsin Stem Cell Symposium
["Stem Cells in the 4th Dimension: Mechanisms of Stem Cell Aging and Maturation"](#)

Sept. 30, 2016

SCRCM Fall Conference, Discovery Building
Please contact [Sue Gilbert](#) for more information.



Stem cell treatment FAQs



When people ask us about stem cell treatments, often mentioning news stories about patients who have received treatments, what resources do we share with them? One of the best we've found is ISSCR's newly updated [A Closer Look at Stem Cells](#) and its page, [Nine Things to Know About Stem Cell Treatments](#).

JOIN THE SCRMC

Are you a UW-Madison faculty or staff member, or a student interested in stem cell and regenerative medicine research?

If so, the SCRMC is your central point of contact for information and education, faculty interaction, and facilitation for research and clinical development.

Operating under the [School of Medicine and Public Health](#) and the [Office of the Vice Chancellor for Research and Graduate Education](#), our center's goals are to:

- Maintain UW-Madison as leader in stem cell and regenerative medicine research and application.
- Foster increased communication about the field within campus and beyond.
- Support basic and translational research, clinical application, and sound bioethics and public policy decisions.
- Develop education, training and outreach programs.
- Enhance philanthropic support.

Copyright 2016 University of Wisconsin System Board of Regents. All rights reserved.

Please contact [Jordana Lenon](#) if you have trouble reading this newsletter and need a more accessible format. If you supervise staff who do not have easy access to email, please print and post for all to read.

MAKE A GIFT TO THE SCRMC

The University of Wisconsin-Madison is a leader in stem cell and regenerative medicine research, with many landmark discoveries, including the first successful isolation and culture of human pluripotent stem cells in 1998 by James Thomson and colleagues.

As you can read in our [SCRMC 2015 Update](#), we are working hard to uncover fundamental processes of diseases and advance better treatments.

Won't you join us in our important mission? Thank you for reading and for your support!

Sincerely,
[Dr. Tim Kamp, Co-Director](#)

[Dr. Bill Murphy, Co-Director](#)

[Sue Gilbert, Program Administrator, Website](#)

[Jordana Lenon, Outreach, Newsletter Editor](#)

Stem Cell and Regenerative
Medicine Center
8457 WIMR II
1111 Highland Avenue
Madison, WI 53705-2275
Phone: 608.263.2982