



Stem Cell & Regenerative Medicine Center

UNIVERSITY OF WISCONSIN-MADISON

Welcome to our Spring/Summer 2016 newsletter.

For more updates, join us on [Facebook](#), [Twitter](#), or on our [website](#).



(CEO class photo by S.Gilbert)

CEO First Class a Success!

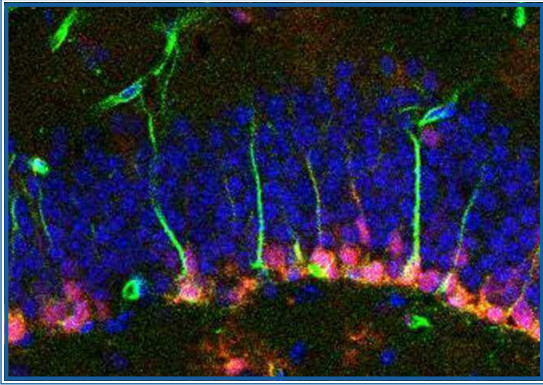
"Foundations of Innovations in Stem Cell Industries" completed its first semester in May 2016. Ten students enrolled in the spring course, the first offered through the SCRMC's [Career Enhancement Opportunity Program](#), or CEO Program for short. Pictured at the Discovery Building April 19, back row, from the left are: Scotty Cadet, Maunie Hayat, Alireza Aghayeemeibody, Dalton Hess, Timothy Abbott. Front, from left are: Nyna Choi, Natalie Patzlaff, Brett Napiwocki, Katherine Jeffris, Steve Wang, Ashley Schwarzenstein, and CEO professors Bill Murphy and Kris Saha. "All 11 students are on track for internships this year," said Murphy. "It's all happening as we envisioned, through the SCRMC and our Education Committee partnering with industry, law firms, WARF and others. All lectures are on video and we are also interested in a multi-university course effort for expanding workforce development."

SURF Fellows Chosen

The [Wisconsin Stem Cell Roundtable \(WiSCR\)](#), in partnership with the SCRMC, has selected four [Summer Undergraduate Research Fellows](#), to gain research experience in SCRMC labs this summer. The fellows and their mentors for the program's fourth summer are:

- Nicole Adrian (nadrian@wisc.edu) – Mentor: Khoa Tran (Rupa Sridharan lab, WID)
- Vincent Belsito (vbelsito@wisc.edu) – Mentor: Eileen Lynch (Masatoshi Suzuki lab, Comparative Biosciences)
- Jack Hermsen (jhermsen2@wisc.edu) – Mentor: Mitch Biermann (Tim Kamp lab, Medicine)
- Hunter Johnson (hjohnson3@wisc.edu) – Mentor: Andrew Dias (Bill Murphy lab, Biomedical Engineering/Orthopedics & Rehabilitation)

SCRMC Research in the News



(Photo by Y. Gao, Waisman Center)

- [Su-Chun Zhang's cell transplants treat Parkinson's in mice under control of designer drug, April 28.](#)
- [iPS cell research projects by Tim Kamp \(cardiac arrest\), Anita Bhattacharyya \(gene editing\) win UW2020: WARF Discovery Initiative grants, April 11](#)
- [Susan Thibeault awarded grant to study treatment for voice disorders, Mar.18.](#)
- [Xinyu Zhao identifies single brain cells that reveal genes controlling formation, development, Mar. 17.](#)
- [Emery Bresnick has new strategy showing potential in expanding blood stem cells, Feb. 24.](#)

D2P promotes entrepreneurship for students

Undergraduate and graduate students are invited to connect with UW-Madison's [Discovery to Product \(D2P\) program](#) to learn about entrepreneurship and how they can get more involved with the program. While D2P welcomes student entrepreneurs with business ideas, a business idea is not required to participate in the program. D2P has supported formation of multiple start-up companies in partnership with SCRMC members.



JUST published!



(Photo by M. Goedland)

Showing off the first issue of the *Journal of Undergraduate Science and Technology (JUST)* hot off the press May 2 are the journal's co-founders and editors — who also happen to be Student Society for Stem Cell Research officers — Eddie Ruiz and Stephanie Seymour. *JUST* is a bi-annual research journal written and administered by UW-Madison undergraduates with the help of faculty, staff and graduate advisers. The journal is dedicated to showcasing and disseminating undergraduate excellence in science and technology research, in strong support of the Wisconsin Idea. Seymour is in Kris Saha's lab and Ruiz has worked in the labs of Jianhua Zhang and Tim Kamp. Enjoy the journal's first issue and read more about the entire journal team at justjournal.org.

Wisconsin Stem Cell Symposium Recap

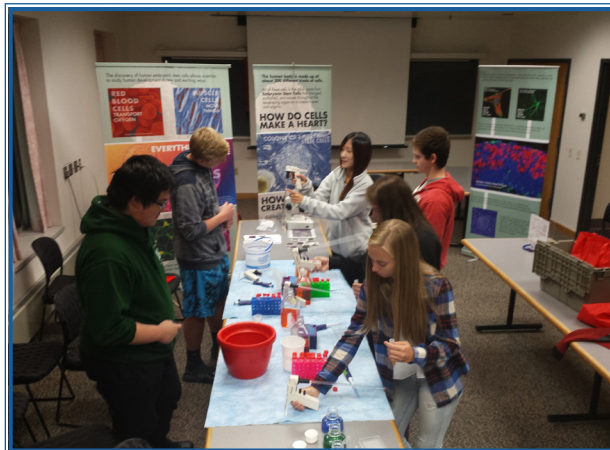
SCRMC scientists Craig Atwood, Dept. of Medicine and VA Hospital, and Barak Blum, Dept. of Cell and Regenerative Biology, joined six other invited speakers from around the United States who presented their research and advances related to stem cell aging and maturation to attendees at the 11th annual [Wisconsin Stem Cell Symposium](#) April 13 at BTCL in Fitchburg. The SCRMC co-hosts the program for the annual meeting at BTCL. Poster competition winners this year were: Andrew Kahlil, 1st place; Xiaoping Bao, 2nd place, and Angela Xie, 3rd place. Enjoy symposium photos by Sue Gilbert [here](#). Thank you to Craig Atwood and Randy Ashton for assisting with organization and moderating, Karin Borgh and the staff at BTCL, and our wonderful sponsoring and exhibiting companies to make this year's symposium a big success!

Fast Facts

Since the Fall of 2008, 354 students have successfully finished [Anatomy 675: Stem Cell Seminar, Special Topics in Anatomy](#). In 2008 and 2009, it was only offered in the Fall. From 2010 on, it has been offered both Fall and Spring.

The University of Wisconsin-Madison 2015-2016 Chancellor's Undergraduate Awards [appear here](#). More than 20 of the awardees are in SCRMC member labs. Way to go, students and faculty!

Spring Public Outreach Gratitude



(Photos by J. Lenon)

Thank you to everyone who helped with our SCRMC public outreach efforts this spring. Together, we served more than 2,000 individuals on campus, at Wisconsin schools, in museums and other venues with knowledge, enthusiasm, and a lot of fun! We are especially grateful to the following for volunteering to lead so many of our near daily outreach events this spring: The Student Society for Stem Cell Research, the Wisconsin Stem Cell Roundtable, and the students of SCRMC member Marina Emborg's lab at the Primate Center.

Above, left: Scott Guthrie from the Emborg lab instructs students from Badger Rock Middle School on March 10 in the SCRMC Learning Lab, also part of the Biotrek Outreach Program at the Biotechnology Center. Above, right: Last fall, SCRMC and SSSCR hosted two "Train the Trainers" sessions at the Biotech Center, to increase the army of campus educators ready to roll at the busy school family science nights come spring. A comment from SSSCR's Josh Dein: "Talking to so many different age groups, learning to explain how our bodies work when they're healthy and when they're not, and sharing what scientists are working on in the lab with the public is so important and rewarding."

Keep up with more news and updates on our [Facebook Page](#)!

JOIN THE SCRMC

Are you a UW-Madison faculty or staff member, or a student interested in stem cell and regenerative medicine research?

If so, the SCRMC is your central point of contact for information and education, faculty interaction, and facilitation for research and clinical development.

Operating under the [School of Medicine and Public Health](#) and the [Office of the Vice Chancellor for Research and Graduate Education](#), our center's goals are to:

- Maintain UW-Madison as leader in stem cell and regenerative medicine research and application.
- Foster increased communication about the field within campus and beyond.
- Support basic and translational research, clinical application, and sound bioethics and public policy decisions.
- Develop education, training and outreach programs.
- Enhance philanthropic support.

Copyright 2016 University of Wisconsin System Board of Regents. All rights reserved.

Please contact [Jordana Lenon](#) if you have trouble reading this newsletter and need a more accessible format. If you supervise staff who do not have easy access to email, please print and post for all to read.

MAKE A GIFT TO THE SCRMC

The University of Wisconsin-Madison is a leader in stem cell and regenerative medicine research, with many landmark discoveries, including the first successful isolation and culture of human pluripotent stem cells in 1998 by James Thomson and colleagues.

As you can read in our [SCRMC 2015 Annual Report](#), we are working hard to uncover fundamental processes of diseases and advance better treatments.

Won't you join us in our important mission? Thank you for reading and for your support!

Sincerely,
[Dr. Tim Kamp, Co-Director](#)

[Dr. Bill Murphy, Co-Director](#)

[Sue Gilbert, Program Administrator, Website](#)

[Jordana Lenon, Outreach, Newsletter Editor](#)

Stem Cell and Regenerative
Medicine Center
8457 WIMR II
1111 Highland Avenue
Madison, WI 53705-2275
Phone: 608.263.2982